

# WHAT'S HAPPENING WITH HOMELESSNESS?

## RECENT CHANGES & TRENDS

**Neelam Sunder**  
**Strategy & Partnership Manager**

# HOMELESS LINK

## WHO WE ARE AND WHAT WE DO

---



Homeless Link is the only national umbrella organisation for frontline homelessness charities and agencies working to end homelessness in England.

The **500** organisations that make up the Homeless Link network support the **70,000** homeless people who access their services on a daily basis.



# WHO IS HOMELESS

The people our members work with



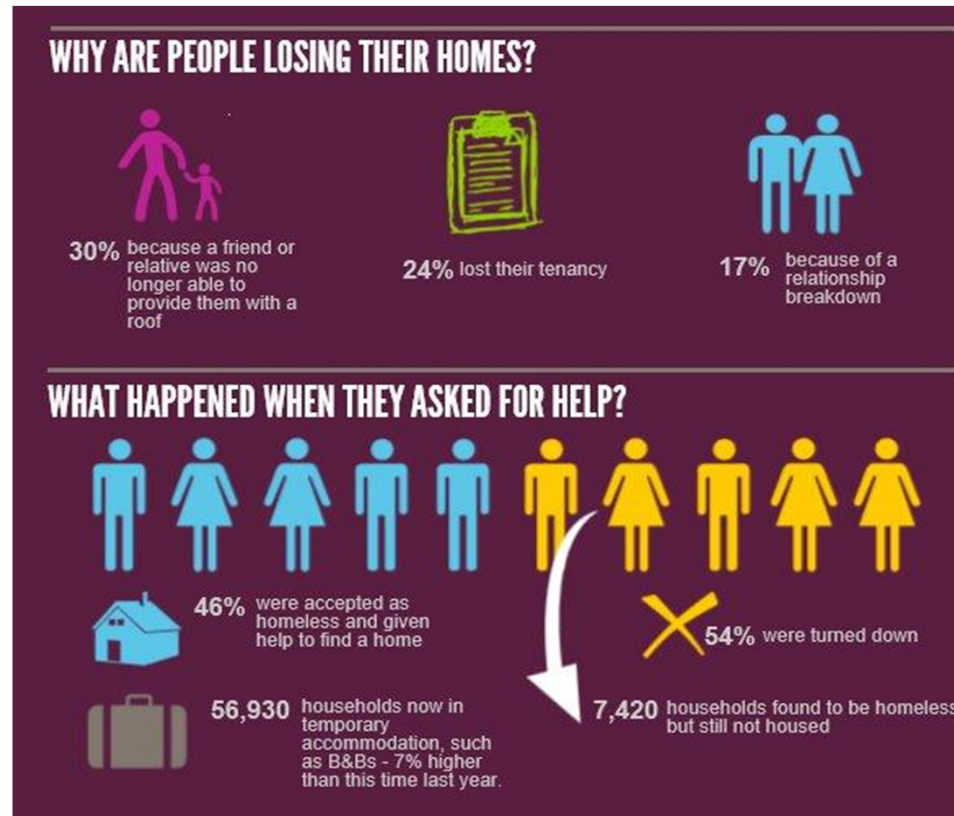
# SERVICE PRESSURES

INCREASED DEMAND, FEWER SERVICES



# FINDINGS

- **2,414** people were counted or estimated to be sleeping rough on any one night in the 2013 count
  - up 5% from 2012
- Around **38,000 bedspaces** in emergency and supported accommodation for single homeless people in England
  - 9% less than in 2010
- <http://homeless.org.uk/snap2013>

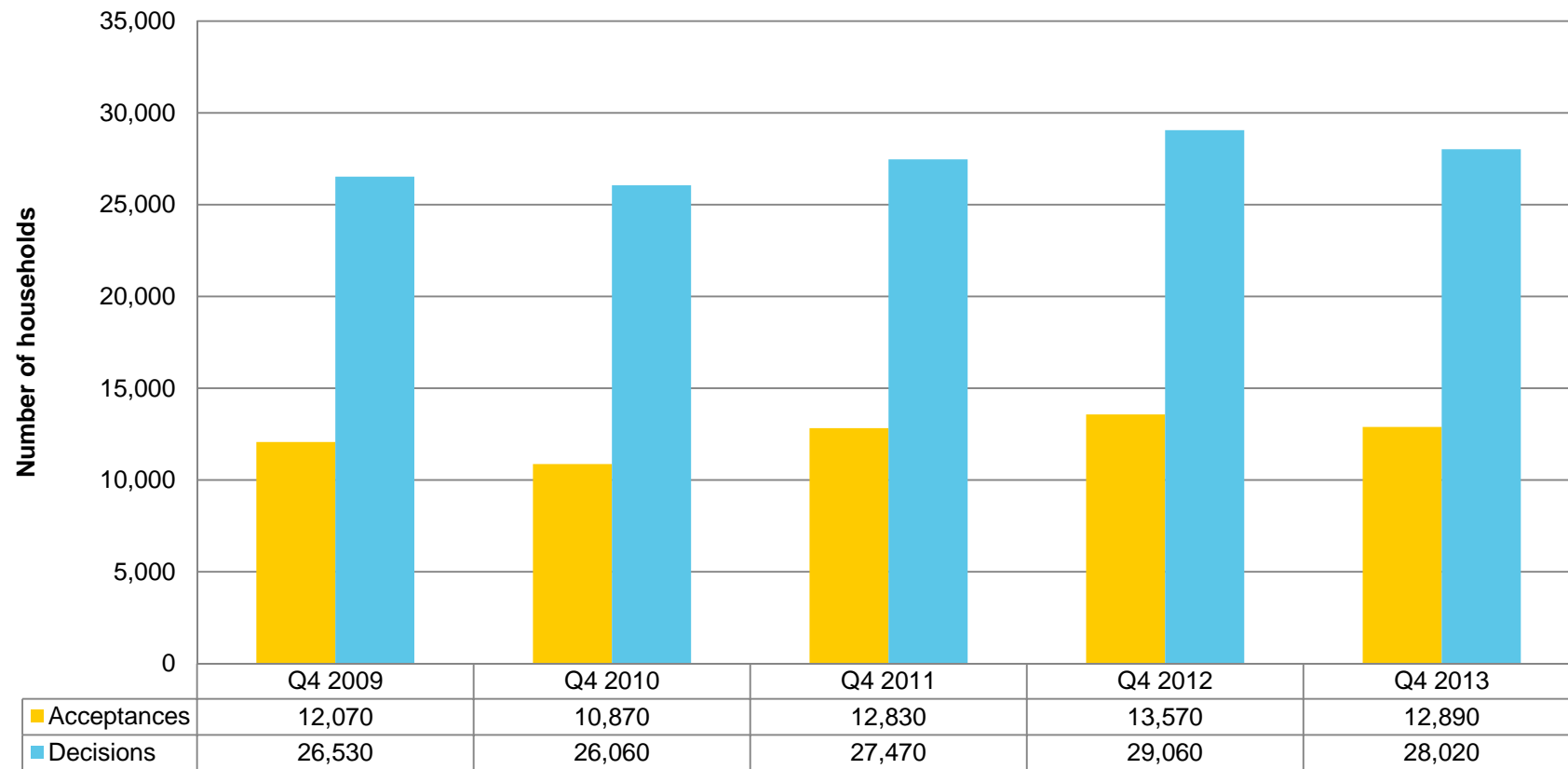


## STATUTORY HOMELESSNESS IN 2013 Q4

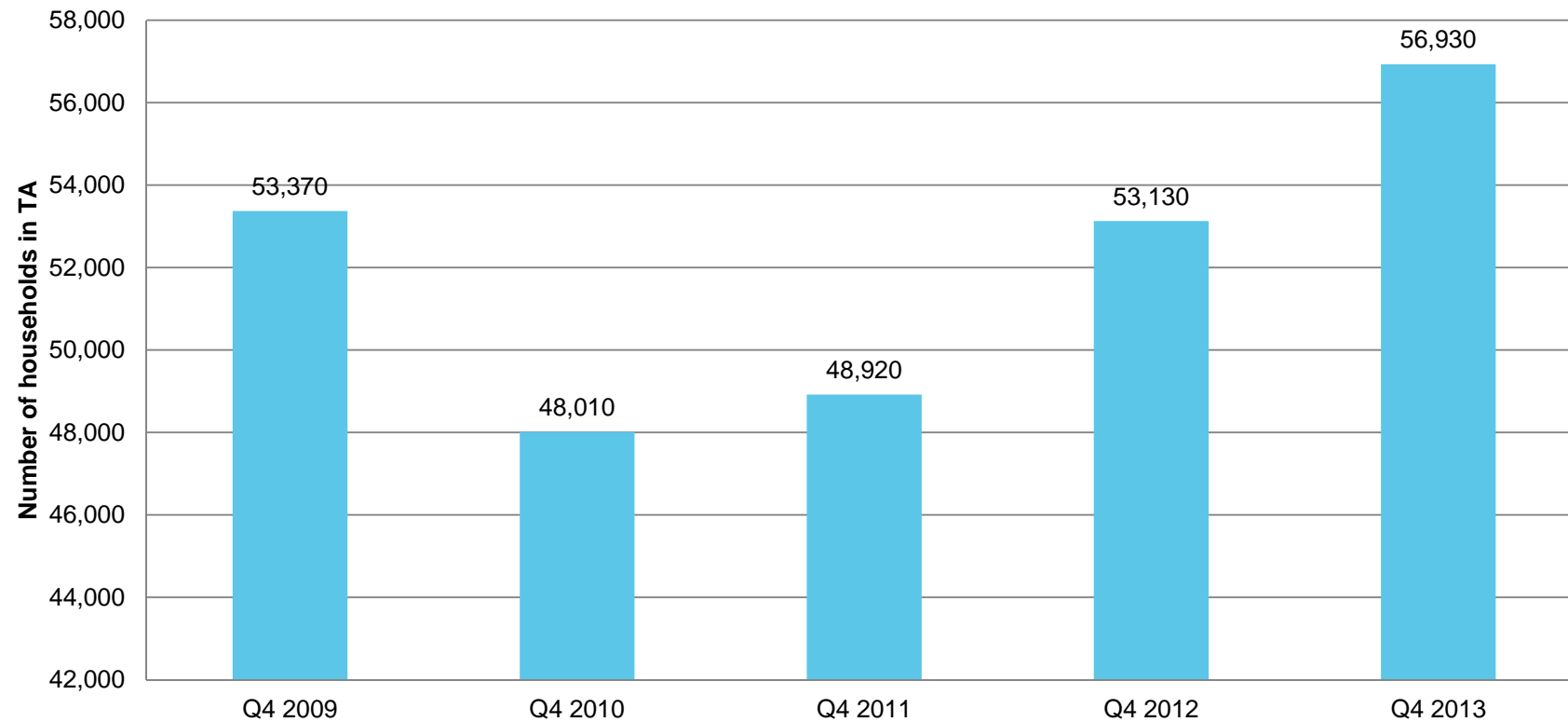
**28,020** households approached Local Authorities for help  
**Acceptances (12,890) are down by 5%** compared to Q4 2012  
 Use of **temporary accommodation has increased 7%**  
 Households placed in **other LA areas has increased 23%**

[Source: DCLG statutory homelessness figures]

# ACCEPTANCES AND APPLICATIONS Q4 2009-13



# NUMBERS OF HOUSEHOLDS IN TEMPORARY ACCOMMODATION Q4 2009-13





## KEY WELFARE CHANGES

### 1. LHA rates

### 2. Shared Accommodation Rate

- 5.5% homes affordable (should be 30%)

### 3. End of Social Fund – Welfare Assistance Schemes

- Government will end welfare assistance funding in April 2015

### 4. Introduction of Universal Credit

- Rugby

### 5. Conditionality and Sanctions

# SANCTIONS

## EXPERIENCES OF HOMELESS PEOPLE

---



Homeless Link's *A High Cost to Pay* indicates that individuals who have experienced homelessness are being disproportionately affected by benefit sanctions.

### In the 3 months to July 2013:

- **One third** of homeless people claiming JSA were sanctioned;
- **1 in 5** claiming ESA were sanctioned.

### Of the services surveyed

- **98%** reported homeless people falling into rent arrears
- **86%** reported homeless people getting into debt

[www.homeless.org.uk/sanctions](http://www.homeless.org.uk/sanctions)

### Impacts

- Sanctions leading to accommodation problems such as rent arrears or service charge arrears and eviction
- Clients' existing problems are getting worse as a result of sanctions, with only a minority being motivated by sanctions to find employment

# FUNDING UPDATES



- 
- Fair Chance Fund £15m
  - £40m capital £ for homelessness services to improve people's health
    - Platform for Life
  - Sub Regional / Cross Authority Funding £8m



# Thank you

**Neelam Sunder**  
**Strategy & Partnership Manager**

**07887 848562**

**[neelam.sunder@homelesslink.org.uk](mailto:neelam.sunder@homelesslink.org.uk)**

**@neelam\_hl**